

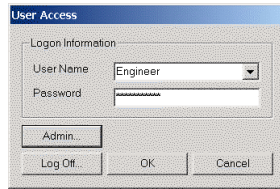
Component to Edit	Step 1	Step 2	Step 3	Step 4	Step 5
Ta Inlet/Outlet (sccm)	0.0	0.0	0.0	0.0	0.0
Gas 1 Ar (sccm)	0.0	0.0	0.0	0.0	0.0
Hf Inlet/Outlet (sccm)	0.0	0.0	0.0	0.0	0.0
Gas 3 O2 (sccm)	0.0	0.0	0.0	0.0	0.0
Hafnium He (sccm)	0.0	0.0	0.0	0.0	0.0
Ta into chamber (sccm)	0.0	0.0	0.0	0.0	0.0
Ta He (sccm)	0.0	0.0	0.0	0.0	0.0
Isopropylalcohol He (sccm)	0.0	0.0	0.0	0.0	0.0
Injection Flow	8752	8752	8752	8752	8752
Deep Freeze	62	62	62	62	62
Acid Wash	005	005	005	005	005
Endpoint	0	0	0	0	0
Process Pressure (mtorr)	0.0	0.0	0.0	0.0	0.0
Tolerance Check Delay (sec)	30	30	30	30	30
Step Processing Time (sec)	0	0	0	0	0

The recipe editor allows the user to create and edit multiple step recipes.

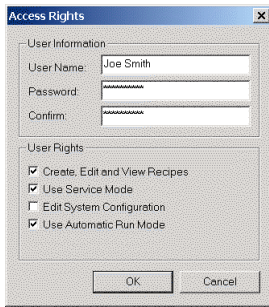
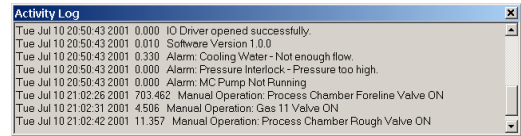
The recipes are then used in the automatic processing mode.

The recipe editor allows all system components to be programmed to run automatically.

A log on dialog that requires the user name and password limits user access.

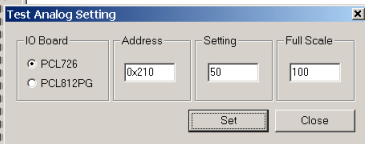
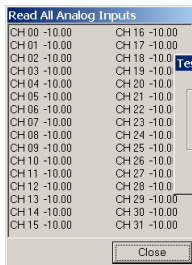


The Activity Log window displays events that are occurring on the system. Each message is logged with a date and time stamp. The log window logs the actions the operator makes when the system is in manual operation mode.



The system administrator assigns rights to the system so that users only have the access to the system that is required to perform their job.

System source code is included with the system for archival or modification purposes. The customer can modify the system as desired.



Diagnostic functions like Test analog Settings and Read All Analog Inputs allow maintenance personnel to quickly troubleshoot the system.

