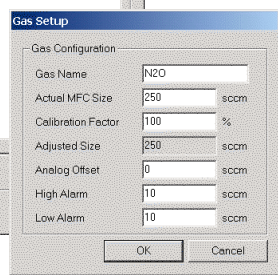
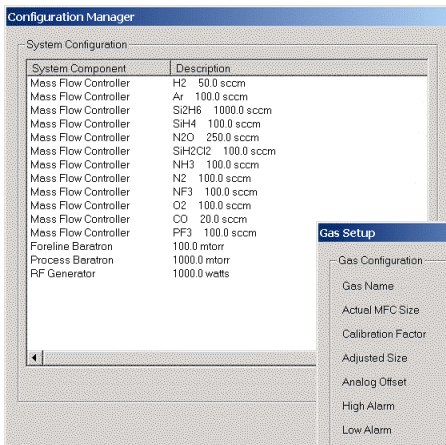
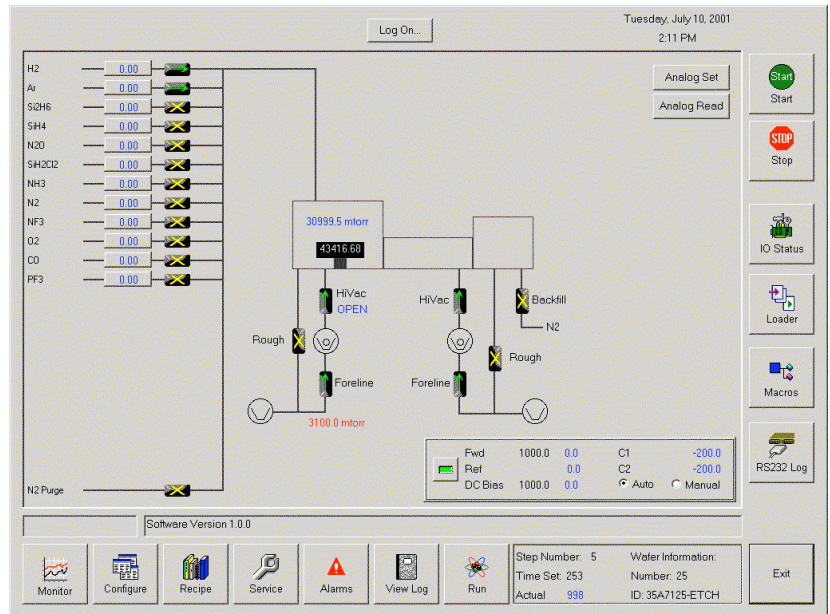


SysView Software

The SysView user interface includes a graphical representation of system components.

Relationships between components are easily determined thereby reducing errors caused by operators.

For example: If the operator wants to vent the chamber manually he can see that the valve between the pump and chamber needs to be closed and the backfill valve needs to be opened.

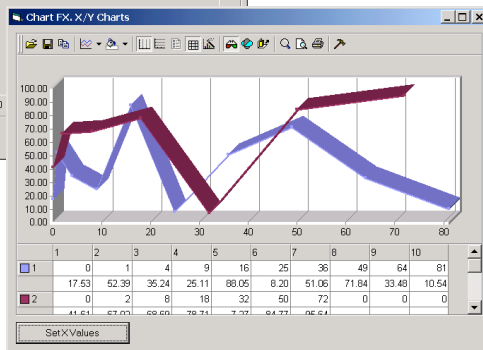
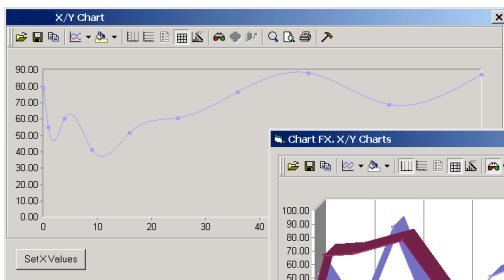


The configuration editor allows the user to edit system components. The component size, offset, high, and low alarm parameters can be configured.

A high and low alarm setting provides a valid operating range for each component. If a component drifts out of range the reading on the main screen will turn from blue to red to alert the user that the component is out of range.

When operating in automatic run mode the System Alarms window will be displayed alerting the operator of the out of range condition.

Type	Date and Time	Source
Error	Tue Jul 10 20:50:43 2001	Cooling Water - Not enough flow
Warning	Tue Jul 10 20:50:43 2001	Pressure Interlock - Pressure too high
Error	Tue Jul 10 20:50:43 2001	MC Pump Not Running



Graphs allow the user to view the data run on the system. Data can be viewed live at run-time or used for analysis after the run.

Chart Types Include:

- Line
- Bar
- Area
- Pie
- Scatter
- Surface